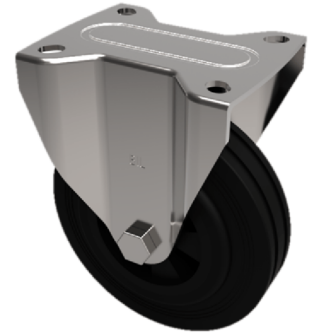


## Ditherm Plate Fixed Castor 100mm 200kg Load

**Product code: BZMHF100AN3**



Pressed steel fixed castor with a top plate fixing fitted with a black Ditherm wheel. Wheel diameter 100mm, tread width 35mm, overall height 133mm, plate size 100mm x 85mm, hole centres 80mm x 60mm or 75mm x 45mm. Load capacity 200kg with a maximum temperature of 300c. REACH compliant, RoHs Compliant, USDA approved FDA approved.

Diameter (mm)	100
Fixing Option	Plate
Castor Type	Fixed
Plate Size (mm)	100 x 85
Hole Centres (mm)	80/75 x 60/45
To Suit Fixing Bolt (mm)	8
Height (mm)	128
Bearing Type	Plain
Wheel Material	Ditherm
Colour / Shore Hardness	Black High Temperature Ditherm
Temperature Resistance	-40 °C to +300 °C
Load Capacity (kg)	200
Tread (mm)	35
Top Plate Thickness (mm)	2.5
Fork Thickness (mm)	2.5