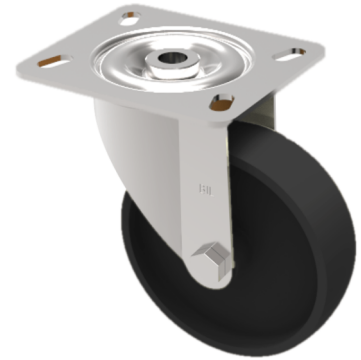


## Ditherm Plate Swivel Castor 100mm 200kg Load

**Product code: SSMH100AN3**



Stainless steel Grade 304 swivel castor with a top plate fixing fitted with a black Ditherm wheel with plain bore. Wheel diameter 100mm, tread width 35mm, overall height 131mm, top plate 100mm x 85mm, hole centres 80mm x 60mm or 75mm x 45mm. Load capacity 200kg at a maximum temperature of 300c. REACH compliant, RoHs Compliant, USDA approved FDA approved.

|                          |                                |
|--------------------------|--------------------------------|
| Diameter (mm)            | 100                            |
| Fixing Option            | Plate                          |
| Castor Type              | Swivel                         |
| Plate Size (mm)          | 100 x 85                       |
| Hole Centres (mm)        | 80/75 x 60/45                  |
| To Suit Fixing Bolt (mm) | 8                              |
| Height (mm)              | 128                            |
| Bearing Type             | Plain                          |
| Swivel Radius (mm)       | 92                             |
| Wheel Material           | Ditherm                        |
| Colour / Shore Hardness  | Black High Temperature Ditherm |
| Temperature Resistance   | -40 °C to +300 °C              |
| Load Capacity (kg)       | 200                            |
| Tread (mm)               | 35                             |
| Top Plate Thickness (mm) | 2.5                            |
| Fork Thickness (mm)      | 2.5                            |