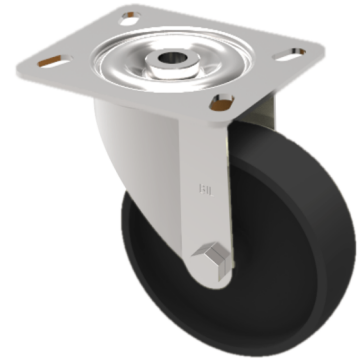


Ditherm Plate Swivel Castor 100mm 200kg Load

Product code: BZMH100ANBJ3



Pressed steel swivel castor with a top plate fixing fitted with a black Ditherm wheel with ball bearings. Wheel diameter 100mm, tread width 35mm, overall height 133mm, plate size 100mm x 85mm, hole centres 80mm x 60mm or 75mm x 45mm. Load capacity 200kg with a maximum temperature of 300c. REACH compliant, RoHs Compliant, USDA approved FDA approved.

Diameter (mm)	100
Fixing Option	Plate
Castor Type	Swivel
Plate Size (mm)	100 x 85
Hole Centres (mm)	80/75 x 60/45
To Suit Fixing Bolt (mm)	8
Height (mm)	128
Bearing Type	Ball
Swivel Radius (mm)	92
Wheel Material	Epoxy Resin
Colour / Shore Hardness	Orange High Temperature Epoxy Resin
Temperature Resistance	-40 °C to +300 °C
Load Capacity (kg)	160
Tread (mm)	38
Top Plate Thickness (mm)	2.5
Fork Thickness (mm)	2.5

BIL GROUP LTD

Porte Marsh Road, Calne, Wiltshire, SN11 9BW

Registered in England No: 2603821

VAT Reg: GB572705729

