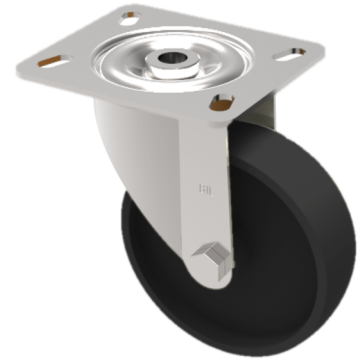


Ditherm Plate Swivel Castor 100mm 220kg Load

Product code: SSMH100AN



Stainless steel Grade 304 swivel castor with a top plate fixing fitted with a black phenolic wheel with plain bore. Wheel diameter 100mm, tread width 38mm, overall height 131mm, top plate 100mm x 85mm, hole centres 80mm x 60mm or 75mm x 45mm. Load capacity 220kg at a maximum temperature of 120c

| | |
|--------------------------|--------------------------------|
| Diameter (mm) | 100 |
| Fixing Option | Plate |
| Castor Type | Swivel |
| Plate Size (mm) | 100 x 85 |
| Hole Centres (mm) | 80/75 x 60/45 |
| To Suit Fixing Bolt (mm) | 8 |
| Height (mm) | 128 |
| Bearing Type | Plain |
| Swivel Radius (mm) | 92 |
| Wheel Material | Ditherm |
| Colour / Shore Hardness | Black High Temperature Ditherm |
| Temperature Resistance | -30 °C to +120 °C |
| Load Capacity (kg) | 200 |
| Tread (mm) | 35 |
| Top Plate Thickness (mm) | 2.5 |
| Fork Thickness (mm) | 2.5 |