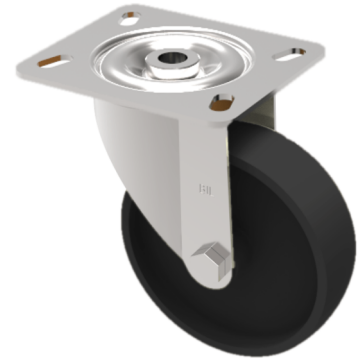


Ditherm Plate Swivel Castor 125mm 230kg Load

Product code: BZMH125AN3TF



Pressed steel swivel castor with a top plate fixing fitted with a Ditherm wheel with PTFE bushes. Wheel diameter 125mm, tread width 40mm, overall height 158mm, top plate 100mm x 85mm, hole centres 80mm x 60mm. Load capacity 230kg. 300 DegreeC. REACH compliant, RoHs Compliant, USDA approved FDA approved.

Diameter (mm)	125
Fixing Option	Plate
Castor Type	Swivel
Plate Size (mm)	100 x 85
Hole Centres (mm)	80/75 x 60/45
To Suit Fixing Bolt (mm)	8
Height (mm)	158
Bearing Type	PTFE Bush
Swivel Radius (mm)	107
Wheel Material	Ditherm
Colour / Shore Hardness	Black High Temperature Ditherm
Temperature Resistance	-40 °C to +300 °C
Load Capacity (kg)	230
Tread (mm)	40
Top Plate Thickness (mm)	2.5
Fork Thickness (mm)	2.5