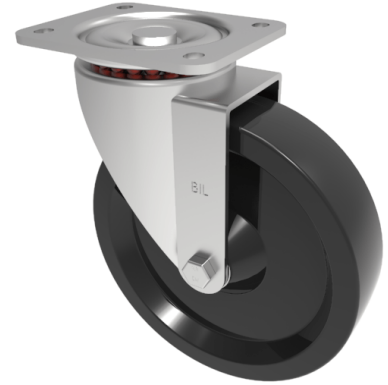


## Ditherm Plate Swivel Castor 150mm 300kg Load

**Product code: BZSPH150ANS/HT**



Pressed steel swivel castor with a top plate fixing fitted with a black Ditherm wheel with sintered bronze bush. Wheel diameter 150mm, tread width 40mm, overall height 190mm, top plate 135mm x 110mm, hole centres 105mm x 80/75mm. Load capacity 300kg at 200c Maximum temperature PLEASE NOTE high temperature grease but no swivel seals in swivel head. (Catalogue SKU BZSPH150ANSHT)

Diameter (mm)	150
Fixing Option	Plate
Castor Type	Swivel
Plate Size (mm)	135 x 110
Hole Centres (mm)	105 x 80/75
To Suit Fixing Bolt (mm)	10
Height (mm)	190
Bearing Type	Bronze Bush
Swivel Radius (mm)	128
Wheel Material	Ditherm
Colour / Shore Hardness	Black High Temperature Ditherm
Temperature Resistance	-40°C to +200°C
Load Capacity (kg)	300
Tread (mm)	40
Top Plate Thickness (mm)	5
Fork Thickness (mm)	5

### BIL GROUP LTD

Porte Marsh Road, Calne, Wiltshire, SN11 9BW

Registered in England No: 2603821

VAT Reg: GB572705729

