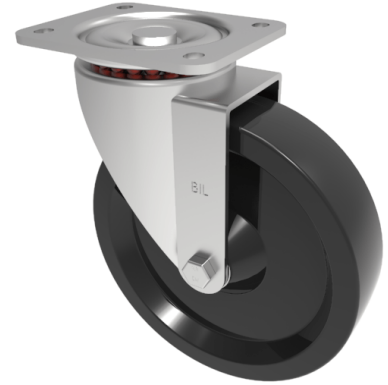


Ditherm Plate Swivel Castor 200mm 300kg Load

Product code: BZSPH200ANS/HT



Pressed steel swivel castor with a top plate fixing fitted with a black Ditherm wheel with sintered bronze bush. Wheel diameter 200mm, tread width 50mm, overall height 238mm, top plate 135mm x 110mm, hole centres 105mm x 80/75mm. Load capacity 300kg at 200c Maximum temperature PLEASE NOTE high temperature grease but no swivel seals in swivel head.

Diameter (mm)	200
Fixing Option	Plate
Castor Type	Swivel
Plate Size (mm)	135 x 110
Hole Centres (mm)	105 x 80/75
To Suit Fixing Bolt (mm)	10
Height (mm)	238
Bearing Type	Bronze Bush
Swivel Radius (mm)	153
Wheel Material	Ditherm
Colour / Shore Hardness	Black High Temperature Ditherm
Temperature Resistance	-40°C to +200°C
Load Capacity (kg)	300
Tread (mm)	50
Top Plate Thickness (mm)	5
Fork Thickness (mm)	5

BIL GROUP LTD

Porte Marsh Road, Calne, Wiltshire, SN11 9BW

Registered in England No: 2603821

VAT Reg: GB572705729

