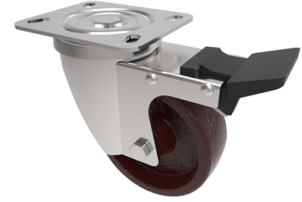


## Ditherm Plate Swivel Castor Brake 100mm 200kg Load

**Product code: SSXM100AN35TFSWB**



Stainless steel grade 304 swivel castor with a top plate fixing fitted with a red Ditherm wheel with a PTFE bush and total lock brake. Wheel diameter 100mm, tread width 35mm, overall height 130mm, top plate 100mm x 85mm, hole centres 80mm x 60mm or 75mm x 45mm, Load capacity 200kg at a maximum temperature of 280c. REACH compliant, RoHs Compliant, USDA approved FDA approved.

Diameter (mm)	100
Fixing Option	Plate
Castor Type	Swivel with Total Lock Brake
Plate Size (mm)	100 x 85
Hole Centres (mm)	80/75 x 60/45
To Suit Fixing Bolt (mm)	8
Height (mm)	128
Bearing Type	PTFE Bush
Swivel Radius (mm)	125
Wheel Material	Ditherm
Colour / Shore Hardness	Red High Temperature Ditherm
Temperature Resistance	-40 °C to +280 °C
Load Capacity (kg)	180
Tread (mm)	35
Top Plate Thickness (mm)	2.5
Fork Thickness (mm)	2.5

### BIL GROUP LTD

Porte Marsh Road, Calne, Wiltshire, SN11 9BW

Registered in England No: 2603821

VAT Reg: GB572705729

