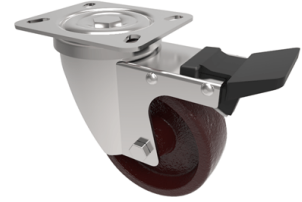


Ditherm Plate Swivel Castor Brake 100mm 220kg Load

Product code: BZMH100AN35TFSWB



Pressed steel swivel plate castor fitted with a red Ditherm wheel with PTFE bushes and a total lock brake. Wheel diameter 100mm, tread width 35mm, overall height 131mm, Load capacity 220kg with a maximum temperature of 280c due to the brake pedal. REACH compliant, RoHs Compliant, USDA approved FDA approved.

Diameter (mm)	100
Fixing Option	Plate
Castor Type	Swivel with Total Lock Brake
Plate Size (mm)	100 x 85
Hole Centres (mm)	80/75 x 60/45
To Suit Fixing Bolt (mm)	8
Height (mm)	128
Bearing Type	PTFE Bush
Swivel Radius (mm)	125
Wheel Material	Ditherm
Colour / Shore Hardness	Red High Temperature Ditherm
Temperature Resistance	-40 °C to +280 °C
Load Capacity (kg)	220
Tread (mm)	35
Top Plate Thickness (mm)	2.5
Fork Thickness (mm)	2.5

BIL GROUP LTD

Porte Marsh Road, Calne, Wiltshire, SN11 9BW

Registered in England No: 2603821

VAT Reg: GB572705729

