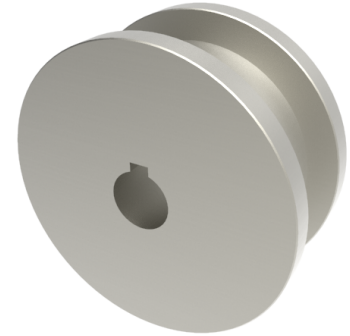


Double Flanged Steel 100mm Keyway Wheel 1800kg Load

Product code: 100WSTDFKM25



POA Double flanged steel wheel with keyway, wheel diameter 100mm, outer flange 125mm, flange width 35mm, total width 60mm, hub length 60mm, bore size 25mm load capacity 1800kg PLEASE NOTE BORE SIZE TOLERANCES IS BASED ON H7 (- 0.0 +0.18) DIN6885 ISO 286-2 STANDARD ****MANUFACTURED TO ORDER****

Wheel Material	Steel
Diameter (mm)	100
Flanged Diameter (mm)	125
Flange Width (mm)	35
Total Width (mm)	60
Hub Width (mm)	60
Bore Size (mm)	25
Load Capacity (kg)	1800
Colour / Shore Hardness	Steel
Bearing Type	Keywayed

BIL GROUP LTD

Porte Marsh Road, Calne, Wiltshire, SN11 9BW

Registered in England No: 2603821

VAT Reg: GB572705729

