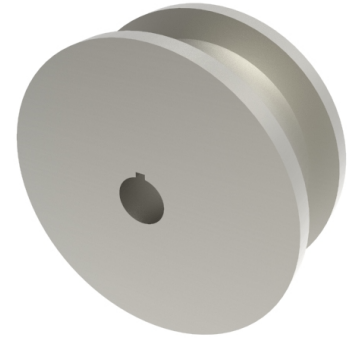


## Double Flanged Steel 150mm Keyway Wheel 3900kg Load

**Product code: 150WSTDFKM35**



**POA** Double flanged steel wheel with keyway, wheel diameter 150mm, outer flange 190mm, flange width 50mm, total width 80mm, hub length 80mm, bore size 35mm load capacity 3900kg  
 PLEASE NOTE BORE SIZE TOLERANCES IS BASED ON H7 ( - 0.0 +0.18 ) DIN6885 ISO 286-2 STANDARD

**\*\*MANUFACTURED TO ORDER\*\***

Wheel Material	Steel
Diameter (mm)	150
Flanged Diameter (mm)	190
Flange Width (mm)	50
Total Width (mm)	80
Hub Width (mm)	80
Bore Size (mm)	35
Load Capacity (kg)	3900
Colour / Shore Hardness	Steel
Bearing Type	Keywayed

### BIL GROUP LTD

Porte Marsh Road, Calne, Wiltshire, SN11 9BW

Registered in England No: 2603821

VAT Reg: GB572705729

