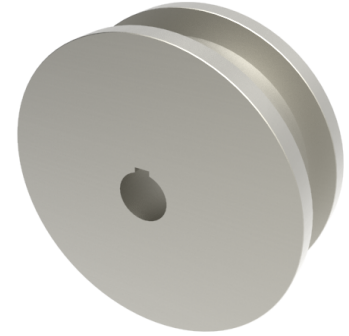


Double Flanged Steel 200mm Keyway Wheel 5100kg Load

Product code: 200WSTDFKM40



POA Double flanged steel wheel with keyway, wheel diameter 200mm, outer flange 240mm, flange width 50mm, total width 90mm, hub length 90mm, bore size 40mm load capacity 5100kg PLEASE NOTE BORE SIZE TOLERANCES IS BASED ON H7 (- 0.0 +0.18) DIN6885 ISO 286-2 STANDARD ****MANUFACTURED TO ORDER****

Wheel Material	Steel
Diameter (mm)	200
Flanged Diameter (mm)	240
Flange Width (mm)	50
Total Width (mm)	90
Hub Width (mm)	90
Bore Size (mm)	40
Load Capacity (kg)	5100
Colour / Shore Hardness	Steel
Bearing Type	Keywayed

BIL GROUP LTD

Porte Marsh Road, Calne, Wiltshire, SN11 9BW

Registered in England No: 2603821

VAT Reg: GB572705729

