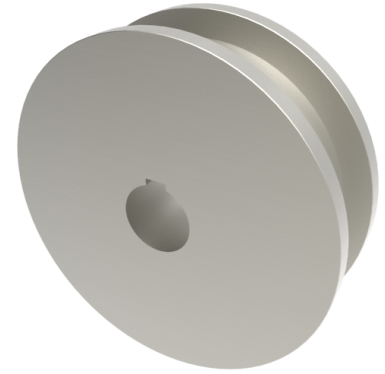


Double Flanged Steel 250mm Keyway Wheel 7700kg Load

Product code: 250WSTDFKM60



POA Double flanged steel wheel with keyway, wheel diameter 250mm, outer flange 295mm, flange width 60mm, total width 100mm, hub length 100mm, bore size 60mm load capacity 7700kg PLEASE NOTE BORE SIZE TOLERANCES IS BASED ON H7 (- 0.0 +0.18) DIN6885 ISO 286-2 STANDARD ****MANUFACTURED TO ORDER****

| | |
|-------------------------|----------|
| Wheel Material | Steel |
| Diameter (mm) | 250 |
| Flanged Diameter (mm) | 295 |
| Flange Width (mm) | 60 |
| Total Width (mm) | 100 |
| Hub Width (mm) | 100 |
| Bore Size (mm) | 60 |
| Load Capacity (kg) | 7700 |
| Colour / Shore Hardness | Steel |
| Bearing Type | Keywayed |

BIL GROUP LTD

Porte Marsh Road, Calne, Wiltshire, SN11 9BW

Registered in England No: 2603821

VAT Reg: GB572705729

