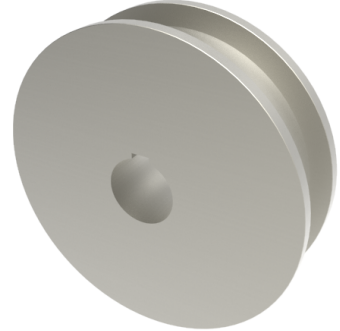


Double Flanged Steel 300mm Keyway Wheel 10,000kg Load

Product code: 300WSTDFKM75X



POA Double flanged steel wheel with keyway, wheel diameter 300mm, outer flange 345mm, flange width 65mm, total width 100mm, hub length 100mm, bore size 75mm load capacity 10,000kg PLEASE NOTE BORE SIZE TOLERANCES IS BASED ON H7 (- 0.0 +0.18) DIN6885 ISO 286-2 STANDARD ****MANUFACTURED TO ORDER****

| | |
|-------------------------|----------|
| Wheel Material | Steel |
| Diameter (mm) | 300 |
| Flanged Diameter (mm) | 345 |
| Flange Width (mm) | 65 |
| Total Width (mm) | 100 |
| Hub Width (mm) | 100 |
| Bore Size (mm) | 75 |
| Load Capacity (kg) | 10000 |
| Colour / Shore Hardness | Steel |
| Bearing Type | Keywayed |

BIL GROUP LTD

Porte Marsh Road, Calne, Wiltshire, SN11 9BW

Registered in England No: 2603821

VAT Reg: GB572705729

