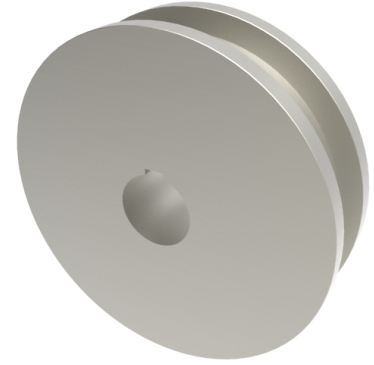


Double Flanged Steel 300mm Keyway Wheel 8500kg Load

Product code: 300WSTDFKM75



POA Double flanged steel wheel with keyway, wheel diameter 300mm, outer flange 345mm, flange width 55mm, total width 100mm, hub length 100mm, bore size 75mm load capacity 8500kg PLEASE NOTE BORE SIZE TOLERANCES IS BASED ON H7 (- 0.0 +0.18) DIN6885 ISO 286-2 STANDARD ****MANUFACTURED TO ORDER****

Wheel Material	Steel
Diameter (mm)	300
Flanged Diameter (mm)	345
Flange Width (mm)	55
Total Width (mm)	100
Hub Width (mm)	100
Bore Size (mm)	75
Load Capacity (kg)	8500
Colour / Shore Hardness	Steel
Bearing Type	Keywayed

BIL GROUP LTD

Porte Marsh Road, Calne, Wiltshire, SN11 9BW

Registered in England No: 2603821

VAT Reg: GB572705729

