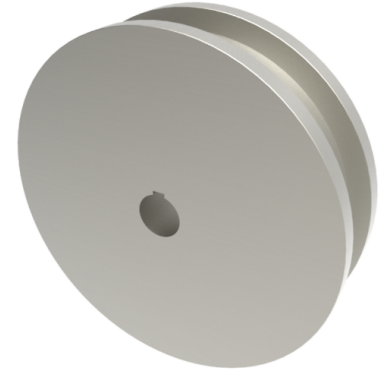


## Double Flanged Steel 350mm Keyway Wheel 10,800kg Load

**Product code: 350WSTDFKM50**



**POA** Double flanged steel wheel with keyway, wheel diameter 350mm, outer flange 395mm, flange width 60mm, total width 110mm, hub length 110mm, bore size 50mm load capacity 10,800kg PLEASE NOTE BORE SIZE TOLERANCES IS BASED ON H7 ( - 0.0 +0.18 ) DIN6885 ISO 286-2 STANDARD **\*\*MANUFACTURED TO ORDER\*\***

Wheel Material	Steel
Diameter (mm)	350
Flanged Diameter (mm)	395
Flange Width (mm)	60
Total Width (mm)	110
Hub Width (mm)	110
Bore Size (mm)	50
Load Capacity (kg)	10800
Colour / Shore Hardness	Steel
Bearing Type	Keywayed

### BIL GROUP LTD

Porte Marsh Road, Calne, Wiltshire, SN11 9BW

Registered in England No: 2603821

VAT Reg: GB572705729

