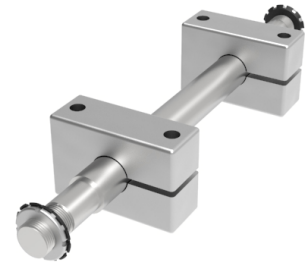


Double Mount Steel Axle Mounting Diameter 30mm 2500kg Load

Product code: DMA30#



POA Double axle assembly, to suit axle diameter 30mm, bar diameter 35mm, total axle length 75mm, minimum axle hub length 50mm, maximum axle hub length 65mm, block width 40mm, *collar width 75mm, fixing block width 105mm, fixing hole centers 70mm, fixing bolt 12mm, load 2500kg ***Maximum position of block. If the block is moved past this point the load will be affected. Ask for more details. #Donates your required length specified by you, please put this in the remarks when ordering in mm. **MANUFACTURED TO ORDER****

To suit axle diameter (mm)	30
Bar Diameter (mm)	35
Total Mounting Length (mm)	75
Minimum Wheel Hub Width (mm)	50
Maximum Wheel Hub Width (mm)	65
Block Width (mm)	40
Maximum Block Position (mm)	75
Fixing Block Length (mm)	105
Fixing hole centres (mm)	70
Fixing Bolt (mm)	12
Load Capacity (kg)	2500

BIL GROUP LTD

Porte Marsh Road, Calne, Wiltshire, SN11 9BW

Registered in England No: 2603821

VAT Reg: GB572705729

