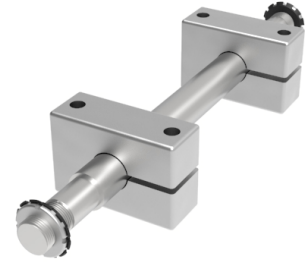


Double Mount Steel Axle Mounting Diameter 40mm 4000kg Load

Product code: DMA40#



POA Double axle assembly, to suit axle diameter 40mm, bar diameter 50mm, total axle length 113mm, minimum axle hub length 85mm, maximum axle hub length 100mm, block width 50mm, *collar width 100mm, fixing block width 130mm, fixing hole centers 90mm, fixing bolt 16mm, load 4000kg ***Maximum position of block. If the block is moved past this point the load will be affected. Ask for more details. #Donates your required length specified by you, please put this in the remarks when ordering in mm. **MANUFACTURED TO ORDER****

To suit axle diameter (mm)	40
Bar Diameter (mm)	50
Total Mounting Length (mm)	113
Minimum Wheel Hub Width (mm)	85
Maximum Wheel Hub Width (mm)	100
Block Width (mm)	50
Maximum Block Position (mm)	100
Fixing Block Length (mm)	130
Fixing hole centres (mm)	90
Fixing Bolt (mm)	16
Load Capacity (kg)	4000

BIL GROUP LTD

Porte Marsh Road, Calne, Wiltshire, SN11 9BW

Registered in England No: 2603821

VAT Reg: GB572705729

