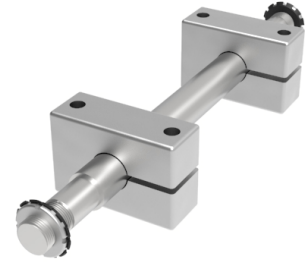


## Double Mount Steel Axle Mounting Diameter 50mm 6300kg Load

**Product code: DMA50#**



**POA** Double axle assembly, to suit axle diameter 50mm, bar diameter 60mm, total axle length 128mm, minimum axle hub length 85mm, maximum axle hub length 110mm, block width 65mm, \*collar width 120mm, fixing block width 170mm, fixing hole centers 120mm, fixing bolt 20mm, load 6300kg

**\*Maximum position of block. If the block is moved past this point the load will be affected. Ask for more details.  
 #Donates your required length specified by you, please put this in the remarks when ordering in mm.**

**\*\*MANUFACTURED TO ORDER\*\***

To suit axle diameter (mm)	50
Bar Diameter (mm)	60
Total Mounting Length (mm)	128
Minimum Wheel Hub Width (mm)	85
Maximum Wheel Hub Width (mm)	110
Block Width (mm)	65
Maximum Block Position (mm)	120
Fixing Block Length (mm)	170
Fixing hole centres (mm)	120
Fixing Bolt (mm)	20
Load Capacity (kg)	6300

### BIL GROUP LTD

Porte Marsh Road, Calne, Wiltshire, SN11 9BW

Registered in England No: 2603821

VAT Reg: GB572705729

