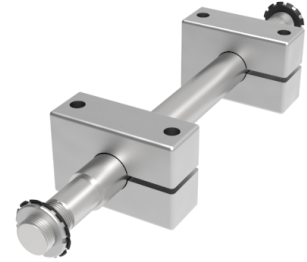


Double Mount Steel Axle Mounting Diameter 75mm 12000kg Load

Product code: DMA75#



POA Double axle assembly, to suit axle diameter 75mm, bar diameter 85mm, total axle length 150mm, minimum axle hub length 85mm, maximum axle hub length 110mm, block width 65mm, *collar width 150mm, fixing block width 210mm, fixing hole centers 150mm, fixing bolt 24mm, load 12000kg

***Maximum position of block. If the block is moved past this point the load will be affected. Ask for more details.
 #Donates your required length specified by you, please put this in the remarks when ordering in mm.**

****MANUFACTURED TO ORDER****

To suit axle diameter (mm)	75
Bar Diameter (mm)	85
Total Mounting Length (mm)	150
Minimum Wheel Hub Width (mm)	85
Maximum Wheel Hub Width (mm)	110
Block Width (mm)	65
Maximum Block Position (mm)	150
Fixing Block Length (mm)	210
Fixing hole centres (mm)	150
Fixing Bolt (mm)	24
Load Capacity (kg)	12000

BIL GROUP LTD

Porte Marsh Road, Calne, Wiltshire, SN11 9BW

Registered in England No: 2603821

VAT Reg: GB572705729

