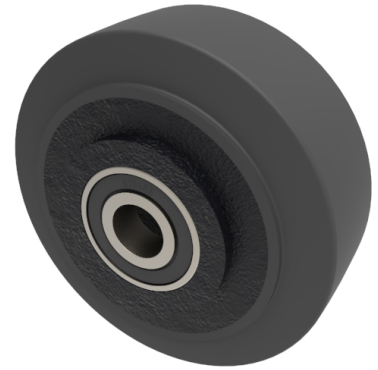


## Elastic Rubber Cast Iron 125mm Ball Bearing Wheel 300kg Load

**Product code: BZH125WCRBJM20**

125mm diameter black elastic rubber tyred on a cast iron centred wheel with a ball bearing. Tread width 50mm, bore 20mm, hub 60mm. Load capacity 300kg.



Wheel Material	Rubber on Cast Iron
Diameter (mm)	125
Load Capacity (kg)	300
Bearing Type	Ball
Bore Size (mm)	20
Tread (mm)	50
Hub Width (mm)	60
Colour / Shore Hardness	Black Elastic Rubber on Cast Iron Rim / 75 Shore A
Temperature Resistance	&quot;-20 °C TO +60 °C

### BIL GROUP LTD

Porte Marsh Road, Calne, Wiltshire, SN11 9BW

Registered in England No: 2603821

VAT Reg: GB572705729

