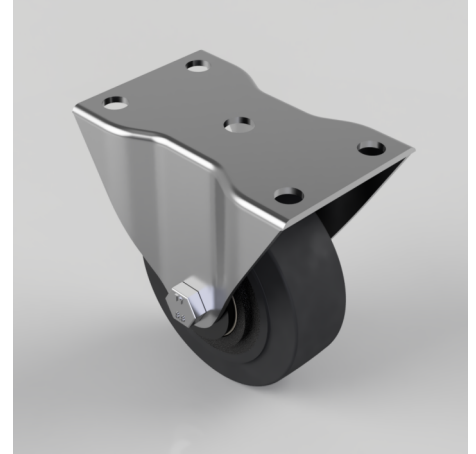


Elastic Rubber Cast Iron Plate Fixed Castor 100mm 160kg Load

Product code: BZHF100CRBJLP

Pressed steel fixed castor with a top plate fixing fitted with a rubber tyred cast iron centred wheel with ball bearings. Wheel diameter 100mm, tread width 38mm, overall height 127mm, plate size 122mm x 77mm hole centres 100mm x 48mm. Load capacity 160kg.



Diameter (mm)	100
Castor Type	Fixed
Fixing Option	Plate
Height (mm)	127
Wheel Material	Rubber on Cast Iron
Colour / Shore Hardness	Black Elastic Rubber on Cast Iron Rim / 75 Shore A
Temperature Resistance	-20 °C TO +60 °C
Bearing Type	Ball
Load Capacity (kg)	160
Tread (mm)	38
Plate Size (mm)	122 x 77
Hole Centres (mm)	100 x 48
Top Plate Thickness (mm)	3
Fork Thickness (mm)	3
To Suit Fixing Bolt (mm)	10

BIL GROUP LTD

Porte Marsh Road, Calne, Wiltshire, SN11 9BW

Registered in England No: 2603821

VAT Reg: GB572705729

