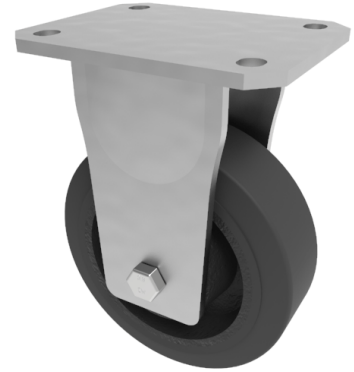


Elastic Rubber Cast Iron Plate Fixed Castor 100mm 210kg Load

Product code: BZSABF100CRBJ

Fabricated zinc plated fixed castor with plate fixing fitted with a black elastic rubber tyred on a cast iron centred wheel with ball bearings. Wheel diameter 100mm, tread width 50mm, overall height 150mm, plate size 138mm x 110mm, hole centres 105mm x 80mm. Load capacity 210kg,



Diameter (mm)	100
Fixing Option	Plate
Castor Type	Fixed
Bearing Type	Ball
Height (mm)	150
Plate Size (mm)	138 x 110
Hole Centres (mm)	105 x 80
To Suit Fixing Bolt (mm)	10
Wheel Material	Rubber on Cast Iron
Colour / Shore Hardness	Black Elastic Rubber on Cast Iron Rim / 75 Shore A
Temperature Resistance	-20 °C TO +60 °C
Top Plate Thickness (mm)	8
Fork Thickness (mm)	6
Load Capacity (kg)	210
Tread (mm)	50