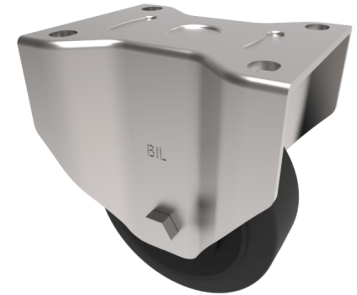


Elastic Rubber Cast Iron Plate Fixed Castor 125mm 300kg Load

Product code: BZPF125CRBJ



Pressed steel fixed castor with a top plate fixing fitted with a black elastic rubber tyre on cast iron centred wheel with ball bearings. Wheel diameter 125mm, tread width 50mm, overall height 164mm, plate size 135mm x 110mm, hole centres 105mm x 80mm. Load capacity 300kg.

Diameter (mm)	125
Castor Type	Fixed
Fixing Option	Plate
Height (mm)	164
Wheel Material	Rubber on Cast Iron
Colour / Shore Hardness	Black Elastic Rubber on Cast Iron Rim / 75 Shore A
Temperature Resistance	-20 °C TO +60 °C
Bearing Type	Ball
Load Capacity (kg)	300
Tread (mm)	50
Plate Size (mm)	135 x 110
Hole Centres (mm)	105 x 80
Top Plate Thickness (mm)	6
Fork Thickness (mm)	4
To Suit Fixing Bolt (mm)	12

BIL GROUP LTD

Porte Marsh Road, Calne, Wiltshire, SN11 9BW

Registered in England No: 2603821

VAT Reg: GB572705729

