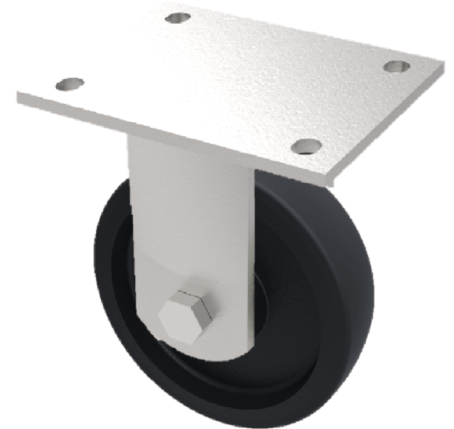


## Elastic Rubber Cast Iron Plate Fixed Castor 150mm 400kg Load

**Product code: BZSABF150CUBJ**

Fabricated yellow ROHS zinc plated fixed castor with plate fixing fitted with a black elastic rubber tyred on a cast iron centred wheel centred wheel with ball bearings. Wheel diameter 150mm, tread width 50mm, overall height 200mm, plate size 138mm x 110mm, hole centres 105mm x 80mm/75mm. Load capacity 400kg, - At 6 kph speed, the load of each wheel is advised to be 80% of the load at 4kph - At 10 kph speed, the load of each wheel is advised to be 55% of the load at 4 kph. - At 16 kph speed, the load of each wheel is advised to be 45% of the load at 4kph. - At 20 kph speed, the load of each wheel is advised to be 35% of the load at 4 kph. - No data for elastic rubber wheel over 20 kph.



Diameter (mm)	150
Fixing Option	Plate
Castor Type	Fixed
Bearing Type	Ball
Height (mm)	200
Plate Size (mm)	138 x 110
Hole Centres (mm)	105 x 80
To Suit Fixing Bolt (mm)	10
Wheel Material	Rubber on Cast Iron
Colour / Shore Hardness	Black Elastic Rubber on Cast Iron Rim / 65 Shore A
Temperature Resistance	-20 °C TO +60 °C
Top Plate Thickness (mm)	8
Fork Thickness (mm)	6
Load Capacity (kg)	400
Tread (mm)	50

### BIL GROUP LTD

Porte Marsh Road, Calne, Wiltshire, SN11 9BW

Registered in England No: 2603821

VAT Reg: GB572705729

