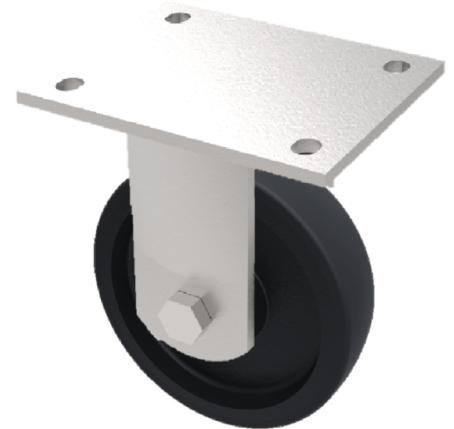


Elastic Rubber Cast Iron Plate Fixed Castor 150mm 400kg Load

Product code: BZQF150CUBJ

Fabricated fixed castors with a top plate fixing fitted with a black elastic rubber tyred cast iron centred wheel with ball bearings. Wheel diameter 150mm, tread width 50mm, overall height 212mm, top plate 175mm x 140mm, hole centres 140mm x 105mm. Load capacity 400kg at 4kph and 140 at 20kph. ** FOR INTERNAL AND EXTERNAL TOWING USE**



Diameter (mm)	150
Fixing Option	Plate
Castor Type	Fixed
Bearing Type	Ball
Height (mm)	212
Plate Size (mm)	175 X 140
Hole Centres (mm)	140 X 105
To Suit Fixing Bolt (mm)	14
Wheel Material	Rubber on Cast Iron
Colour / Shore Hardness	Black Elastic Rubber on Cast Iron Rim / 65 Shore A
Temperature Resistance	-20 °C TO +60 °C
Top Plate Thickness (mm)	12
Fork Thickness (mm)	10
Load Capacity (kg)	400
Tread (mm)	50