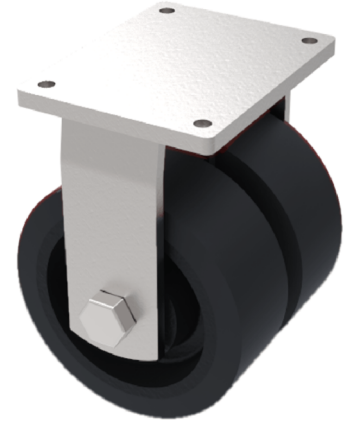


Elastic Rubber Cast Iron Plate Fixed Castor 150mm 800kg Load

Product code: 2BZQF150CUBJ

Fabricated fixed castor with a flat plate fixing fitted with 2 x black elastic rubber tyred on cast iron centred wheels with ball bearings. Wheel diameter 150mm, tread width 50mm, overall height 212mm, plate size 170mm x 140mm, hole centres 140mm x 105mm. Load capacity 800kg at 4kph and 280kg at 20kph. ** FOR INTERNAL AND EXTERNAL TOWING USE **



Diameter (mm)	150
Fixing Option	Plate
Castor Type	Fixed
Bearing Type	Ball
Plate Size (mm)	175 X 140
Hole Centres (mm)	140 X 105
Height (mm)	212
To Suit Fixing Bolt (mm)	14
Wheel Material	Rubber on Cast Iron
Colour / Shore Hardness	Black Elastic Rubber on Cast Iron Rim / 65 Shore A
Temperature Resistance	"-20 °C TO +60 °C
Tread (mm)	2 x 50
Load Capacity (kg)	800
Top Plate Thickness (mm)	12
Fork Thickness (mm)	8

BIL GROUP LTD

Porte Marsh Road, Calne, Wiltshire, SN11 9BW

Registered in England No: 2603821

VAT Reg: GB572705729

