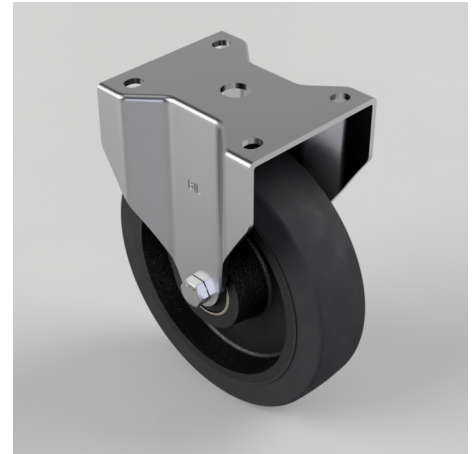


Elastic Rubber Cast Iron Plate Fixed Castor 200mm 450kg Load

Product code: BZPHF200CRBJ

Pressed fixed castor with a top plate fixing fitted with a black elastic rubber wheel on a cast iron centred wheel with ball journal bearings. Wheel diameter 200mm, tread width 50mm, overall height 238mm, top plate 135mm x 115mm, hole centres 105mm x 75mm/80mm. load capacity 450kg.



Diameter (mm)	200
Castor Type	Fixed
Fixing Option	Plate
Height (mm)	238
Wheel Material	Rubber on Cast Iron
Colour / Shore Hardness	Black Elastic Rubber on Cast Iron Rim / 75 Shore A
Temperature Resistance	-20 °C TO +60 °C
Bearing Type	Ball
Load Capacity (kg)	450
Tread (mm)	50
Plate Size (mm)	135 x 115
Hole Centres (mm)	105 x 80/75
Top Plate Thickness (mm)	4
Fork Thickness (mm)	4
To Suit Fixing Bolt (mm)	10