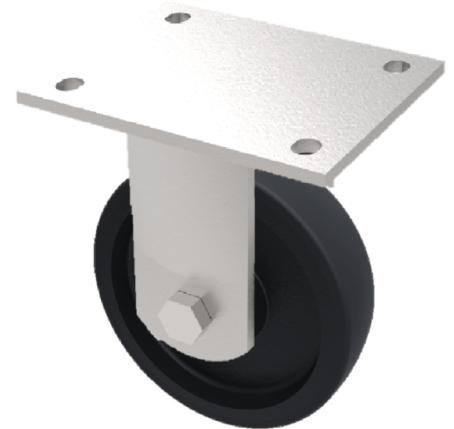


Elastic Rubber Cast Iron Plate Fixed Castor 200mm 500kg Load

Product code: BZQF200CUBJ/50

Fabricated fixed castor with a flat plate fixing fitted with a 65 shore A black elastic rubber tyred cast iron centred wheel with ball bearing. Wheel diameter 200mm, tread width 75mm, overall height 264mm, plate size 175mm x 140mm, hole centres 140mm x 105mm. Load capacity 500kg at 4kph and 175kg at 20kph. ** FOR INTERNAL AND EXTERNAL TOWING USE**



Diameter (mm)	200
Fixing Option	Plate
Castor Type	Fixed
Bearing Type	Ball
Height (mm)	264
Plate Size (mm)	175 X 140
Hole Centres (mm)	140 X 105
To Suit Fixing Bolt (mm)	14
Wheel Material	Rubber on Cast Iron
Colour / Shore Hardness	Black Elastic Rubber on Cast Iron Rim / 65 Shore A
Temperature Resistance	-20 °C TO +60 °C
Top Plate Thickness (mm)	12
Fork Thickness (mm)	10
Load Capacity (kg)	500
Tread (mm)	50

BIL GROUP LTD

Porte Marsh Road, Calne, Wiltshire, SN11 9BW

Registered in England No: 2603821

VAT Reg: GB572705729

