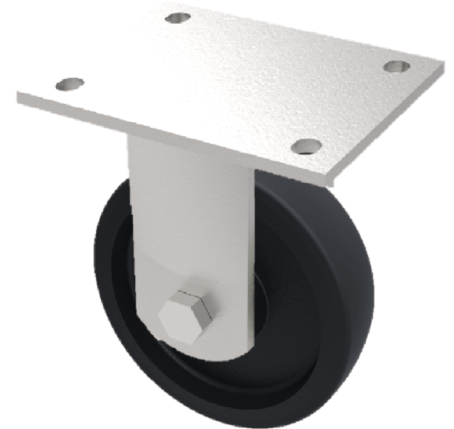


## Elastic Rubber Cast Iron Plate Fixed Castor 200mm 600kg Load

**Product code: BZKFL200CRBJ/60**

Fabricated fixed castor with a top plate fixing fitted with a black elastic rubber tyre on cast iron centred wheel with ball bearings. Wheel diameter 200mm, tread width 60mm, overall height 245mm, plate size 138mm x 110mm, hole centres 105mm x 80/75mm. Load capacity 600kg. NB the BIL catalogue is incorrect overall height is 245mm.



Diameter (mm)	200
Fixing Option	Plate
Castor Type	Fixed
Bearing Type	Ball
Height (mm)	245
Plate Size (mm)	138 x 110
Hole Centres (mm)	105 x 80/75
To Suit Fixing Bolt (mm)	10
Wheel Material	Rubber on Cast Iron
Colour / Shore Hardness	Black Elastic Rubber on Cast Iron Rim / 75 Shore A
Temperature Resistance	-20 °C TO +60 °C
Top Plate Thickness (mm)	7.5
Fork Thickness (mm)	6
Load Capacity (kg)	600
Tread (mm)	60

### BIL GROUP LTD

Porte Marsh Road, Calne, Wiltshire, SN11 9BW

Registered in England No: 2603821

VAT Reg: GB572705729

