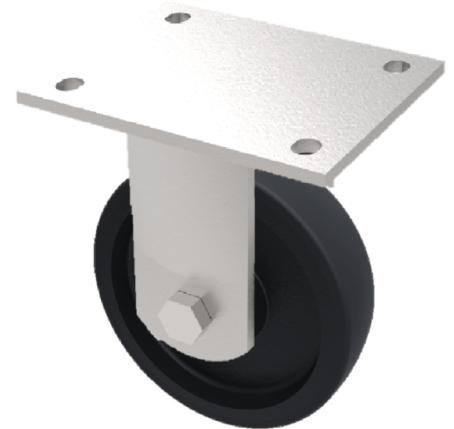


Elastic Rubber Cast Iron Plate Fixed Castor 200mm 600kg Load

Product code: BZSABF200CRBJ

Fabricated zinc plated fixed castor with plate fixing fitted with a black elastic rubber cast iron centred wheel with ball bearings. Wheel diameter 200mm, tread width 60mm, overall height 250mm, plate size 138mm x 110mm, hole Centre's 105mm x 80 or 75mm. Load capacity 600kg



Diameter (mm)	200
Fixing Option	Plate
Castor Type	Fixed
Bearing Type	Ball
Height (mm)	250
Plate Size (mm)	138 x 110
Hole Centres (mm)	105 x 80
To Suit Fixing Bolt (mm)	10
Wheel Material	Rubber on Cast Iron
Colour / Shore Hardness	Black Elastic Rubber on Cast Iron Rim / 75 Shore A
Temperature Resistance	-20 °C TO +60 °C
Top Plate Thickness (mm)	8
Fork Thickness (mm)	6
Load Capacity (kg)	600
Tread (mm)	60