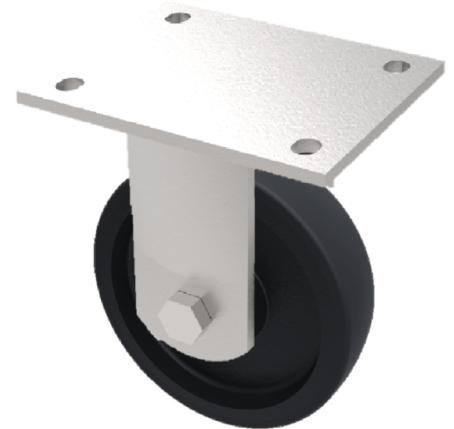


Elastic Rubber Cast Iron Plate Fixed Castor 200mm 650kg Load

Product code: BZQF200CUBJ

Fabricated fixed castor with a flat plate fixing fitted with a 65 shore A black elastic rubber tyred cast iron centred wheel with ball bearing. Wheel diameter 200mm, tread width 75mm, overall height 264mm, plate size 175mm x 140mm, hole centres 140mm x 105mm. Load capacity 600kg at 4kph and 228kg at 20kph. ** FOR INTERNAL AND EXTERNAL TOWING USE**



| | |
|--------------------------|--|
| Diameter (mm) | 200 |
| Fixing Option | Plate |
| Castor Type | Fixed |
| Bearing Type | Ball |
| Height (mm) | 264 |
| Plate Size (mm) | 175 X 140 |
| Hole Centres (mm) | 140 X 105 |
| To Suit Fixing Bolt (mm) | 14 |
| Wheel Material | Rubber on Cast Iron |
| Colour / Shore Hardness | Black Elastic Rubber on Cast Iron Rim / 65 Shore A |
| Temperature Resistance | -20 °C TO +60 °C |
| Top Plate Thickness (mm) | 12 |
| Fork Thickness (mm) | 10 |
| Load Capacity (kg) | 650 |
| Tread (mm) | 75 |

BIL GROUP LTD

Porte Marsh Road, Calne, Wiltshire, SN11 9BW

Registered in England No: 2603821

VAT Reg: GB572705729

