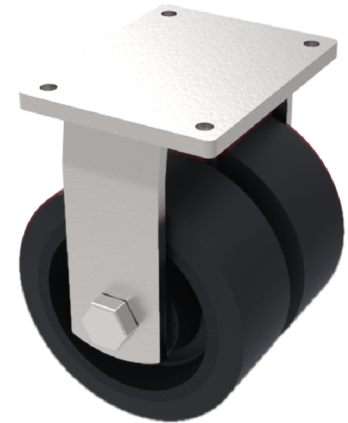


## Elastic Rubber Cast Iron Plate Fixed Castor 250mm 1100kg Load

**Product code: 2BZQF250CUBJ**



Fabricated fixed castor with a flat plate fixing fitted with 2 x black elastic rubber tyred on cast iron centred wheels with ball bearings. Wheel diameter 250mm, tread width 50mm, overall height 314mm, plate size 170mm x 140mm, hole centres 140mm x 105mm. Load capacity 1100kg. - At 6 kph speed, the load of each wheel is advised to be 80% of the load at 4kph - At 10 kph speed, the load of each wheel is advised to be 55% of the load at 4 kph. - At 16 kph speed, the load of each wheel is advised to be 45% of the load at 4kph. - At 20 kph speed, the load of each wheel is advised to be 35% of the load at 4 kph. - No data for elastic rubber wheel over 20 kph.

Diameter (mm)	250
Fixing Option	Plate
Castor Type	Fixed
Bearing Type	Ball
Plate Size (mm)	175 X 140
Hole Centres (mm)	140 X 105
Height (mm)	314
To Suit Fixing Bolt (mm)	14
Wheel Material	Rubber on Cast Iron
Colour / Shore Hardness	Black Elastic Rubber on Cast Iron Rim / 65 Shore A
Temperature Resistance	&quot;-20 °C TO +60 °C
Tread (mm)	2 x 50
Load Capacity (kg)	1100
Top Plate Thickness (mm)	12
Fork Thickness (mm)	8

### BIL GROUP LTD

Porte Marsh Road, Calne, Wiltshire, SN11 9BW

Registered in England No: 2603821

VAT Reg: GB572705729

