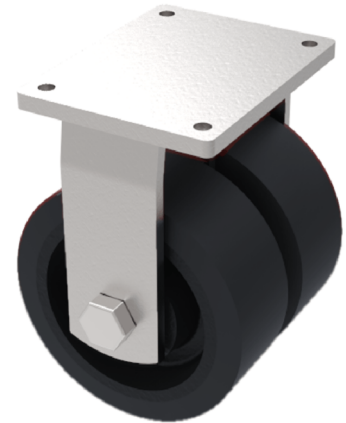


## Elastic Rubber Cast Iron Plate Fixed Castor 250mm 2040kg Load

**Product code: 2BZXXHF250CRBJ**

Fabricated twin wheel fixed castor with a top plate fixing fitted with a black elastic rubber tyred cast iron centred wheel with a ball bearing. Wheel diameter 250mm, tread width 2 x 100mm, overall height 330mm, plate size 255 x 200mm, hole centres 210mm x 160mm. Load capacity 2040kg.



Tread (mm)	100
Plate Size (mm)	255 X 200
Hole Centres (mm)	210 X 160
To Suit Fixing Bolt (mm)	16
Height (mm)	330
Bearing Type	Ball
Castor Type	Fixed
Diameter (mm)	250
Load Capacity (kg)	2040
Wheel Material	Black Elastic Rubber on Cast Iron
Fixing Option	Plate