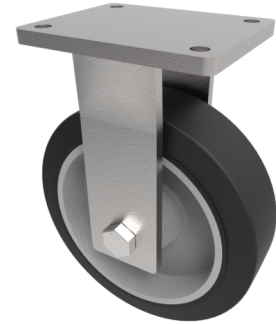


Elastic Rubber Cast Iron Plate Fixed Castor 250mm 550kg Load

Product code: BZQF250CUBJ/50



Fabricated fixed castor with a flat plate fixing fitted with a black elastic rubber tyred cast iron centred wheel with ball bearing. Wheel diameter 250mm, tread width 50mm, overall height 314mm, plate size 175mm x 140mm, hole centres 140mm x 105mm. Load capacity 550kg at 4kph ** FOR INTERNAL AND EXTERNAL TOWING USE**

Diameter (mm)	250
Fixing Option	Plate
Castor Type	Fixed
Bearing Type	Ball
Height (mm)	314
Plate Size (mm)	175 X 140
Hole Centres (mm)	140 X 105
To Suit Fixing Bolt (mm)	14
Wheel Material	Rubber on Cast Iron
Colour / Shore Hardness	Black Elastic Rubber on Cast Iron Rim / 65 Shore A
Temperature Resistance	-20 °C TO +60 °C
Top Plate Thickness (mm)	12
Fork Thickness (mm)	10
Load Capacity (kg)	550
Tread (mm)	50

BIL GROUP LTD

Porte Marsh Road, Calne, Wiltshire, SN11 9BW

Registered in England No: 2603821

VAT Reg: GB572705729

