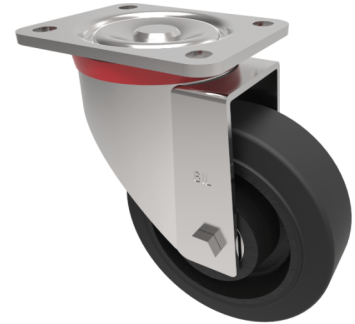


Elastic Rubber Cast Iron Plate Swivel Castor 150mm 350kg Load

Product code: BZP150CRBJ

Pressed steel swivel castor with a flat plate fixing fitted with a black elastic rubber tyre on a cast iron centred wheel with a ball bearing. Wheel diameter 150mm, tread width 50mm, overall height 194mm, plate size 135mm x 110mm, hole centres 105mm x 80mm, Load capacity 350kg.



| | |
|--------------------------|--|
| Diameter (mm) | 150 |
| Castor Type | Swivel |
| Fixing Option | Plate |
| Height (mm) | 194 |
| Wheel Material | Rubber on Cast Iron |
| Colour / Shore Hardness | Black Elastic Rubber on Cast Iron Rim / 75 Shore A |
| Temperature Resistance | -20 °C TO +60 °C |
| Bearing Type | Ball |
| Load Capacity (kg) | 350 |
| Tread (mm) | 50 |
| Swivel Radius (mm) | 130 |
| Plate Size (mm) | 135 x 110 |
| Hole Centres (mm) | 105 x 80 |
| Top Plate Thickness (mm) | 6 |
| Fork Thickness (mm) | 4 |
| To Suit Fixing Bolt (mm) | 12 |

BIL GROUP LTD

Porte Marsh Road, Calne, Wiltshire, SN11 9BW

Registered in England No: 2603821

VAT Reg: GB572705729

