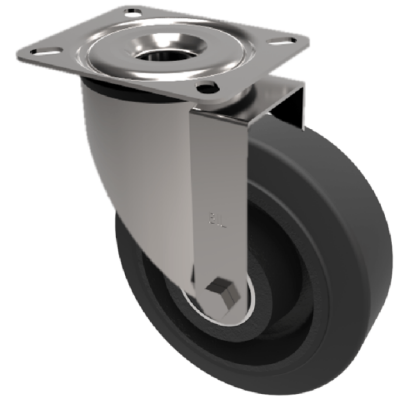


Elastic Rubber Cast Iron Plate Swivel Castor 200mm 450kg Load

Product code: BZPH200CRBJ

Pressed steel swivel castor with a top plate fixing fitted with a black elastic rubber tyre with cast iron centre with ball bearings. Wheel diameter 200mm, tread width 50mm, overall height 238mm, top plate 135mm x 110mm, hole centres 105mm x 80/75mm. Load capacity 450kg.



Diameter (mm)	200
Castor Type	Swivel
Fixing Option	Plate
Height (mm)	238
Wheel Material	Rubber on Cast Iron
Colour / Shore Hardness	Black Elastic Rubber on Cast Iron Rim / 75 Shore A
Temperature Resistance	-20 °C TO +60 °C
Bearing Type	Ball
Load Capacity (kg)	450
Tread (mm)	50
Swivel Radius (mm)	153
Plate Size (mm)	135 x 110
Hole Centres (mm)	105 x 80/75
Top Plate Thickness (mm)	5
Fork Thickness (mm)	5
To Suit Fixing Bolt (mm)	10

BIL GROUP LTD

Porte Marsh Road, Calne, Wiltshire, SN11 9BW

Registered in England No: 2603821

VAT Reg: GB572705729

