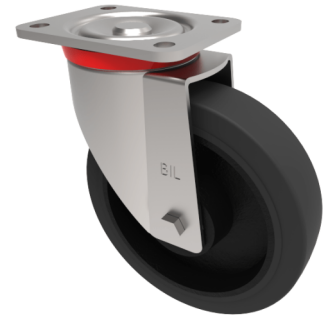


## Elastic Rubber Cast Iron Plate Swivel Castor 200mm 450kg Load

**Product code: BZP200CRBJ**

Pressed steel swivel castor with a flat plate fixing fitted with a black elastic rubber tyre on cast iron centred wheel with a ball bearing. Wheel diameter 200mm, tread width 50mm, overall height 239mm, plate size 135mm x 110mm, hole centres 105mm x 80mm. Load capacity 450kg.



Diameter (mm)	200
Castor Type	Swivel
Fixing Option	Plate
Height (mm)	239
Wheel Material	Rubber on Cast Iron
Colour / Shore Hardness	Black Elastic Rubber on Cast Iron Rim / 75 Shore A
Temperature Resistance	-20 °C TO +60 °C
Bearing Type	Ball
Load Capacity (kg)	450
Tread (mm)	50
Swivel Radius (mm)	155
Plate Size (mm)	135 x 110
Hole Centres (mm)	105 x 80
Top Plate Thickness (mm)	6
Fork Thickness (mm)	4
To Suit Fixing Bolt (mm)	12

### BIL GROUP LTD

Porte Marsh Road, Calne, Wiltshire, SN11 9BW

Registered in England No: 2603821

VAT Reg: GB572705729

