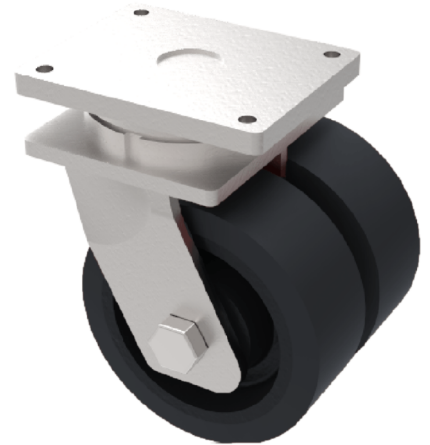


Elastic Rubber Cast Iron Plate Swivel Castor 250mm 2700kg Load

Product code: 2BZXXH250CUBJ

Fabricated twin wheel swivel castor with a top plate fixing fitted with 2 x 78 shore A black elastic rubber tyred steel disc centred wheels with ball bearings. Wheel diameter 250mm, tread width 2 x 100mm, overall height 330mm, plate size 255 x 200mm, hole centres 210mm x 160mm. Load capacity 2700kg.



Diameter (mm)	250
Fixing Option	Plate
Castor Type	Swivel
Bearing Type	Ball
Plate Size (mm)	255 X 200
Hole Centres (mm)	210 X 160
Height (mm)	330
Swivel Radius (mm)	225
To Suit Fixing Bolt (mm)	16
Wheel Material	Rubber on Cast Iron
Colour / Shore Hardness	Black Elastic Rubber on Cast Iron Rim / 65 Shore A
Temperature Resistance	"-20 °C TO +60 °C
Tread (mm)	2 x 100
Load Capacity (kg)	2700
Top Plate Thickness (mm)	21
Fork Thickness (mm)	12

BIL GROUP LTD

Porte Marsh Road, Calne, Wiltshire, SN11 9BW

Registered in England No: 2603821

VAT Reg: GB572705729

