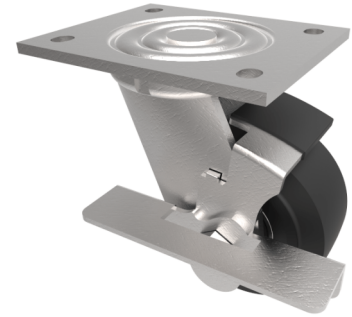


Elastic Rubber Cast Iron Plate Swivel Castor Brake 100mm 210kg Load

Product code: BZEJ100CRBJBK



Fabricated swivel castor with a top plate fixing fitted with a black elastic rubber wheel on a cast iron centre with ball bearings and a side fitting wheel brake. Wheel diameter 100mm, tread width 50mm, overall height 143mm, top plate 135mm x 110mm, hole centres 105mm x 80mm. Load capacity 210kg.

| | |
|--------------------------|--|
| Diameter (mm) | 100 |
| Fixing Option | Plate |
| Castor Type | Swivel with Wheel Brake |
| Bearing Type | Ball |
| Height (mm) | 142 |
| Plate Size (mm) | 135 x 110 |
| Hole Centres (mm) | 105 x 80 |
| To Suit Fixing Bolt (mm) | 12 |
| Wheel Material | Rubber on Cast Iron |
| Colour / Shore Hardness | Black Elastic Rubber on Cast Iron Rim / 75 Shore A |
| Temperature Resistance | -20 °C TO +60 °C |
| Top Plate Thickness (mm) | 5.5 |
| Fork Thickness (mm) | 5.5 |
| Swivel Radius (mm) | 122 |
| Load Capacity (kg) | 210 |
| Tread (mm) | 50 |