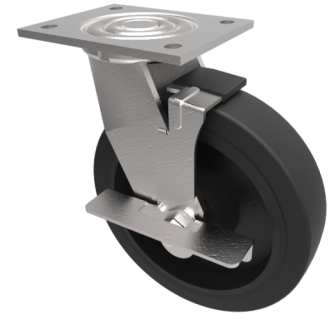


Elastic Rubber Cast Iron Plate Swivel Castor Brake 200mm 450kg Load

Product code: BZJ200CRBJBK

Fabricated swivel castor with a flat plate fixing fitted with a black elastic rubber tyre on cast iron centred wheel with a ball bearing and side fitting wheel brake. Wheel diameter 200mm, tread width 50mm, overall height 239mm, plate size 135mm x 110mm, hole centres 105mm x 80mm. Load capacity 450kg.



Diameter (mm)	200
Fixing Option	Plate
Castor Type	Swivel with Wheel Brake
Bearing Type	Ball
Height (mm)	240
Plate Size (mm)	135 x 110
Hole Centres (mm)	105 x 80
To Suit Fixing Bolt (mm)	10
Wheel Material	Rubber on Cast Iron
Colour / Shore Hardness	Black Elastic Rubber on Cast Iron Rim / 75 Shore A
Temperature Resistance	-20 °C TO +60 °C
Top Plate Thickness (mm)	5.5
Fork Thickness (mm)	5.5
Swivel Radius (mm)	154
Load Capacity (kg)	450
Tread (mm)	50

BIL GROUP LTD

Porte Marsh Road, Calne, Wiltshire, SN11 9BW

Registered in England No: 2603821

VAT Reg: GB572705729

