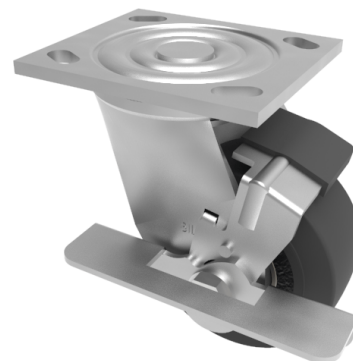


## Elastic Rubber Cast Iron Plate Swivel Castor Brake 200mm 450kg Load

**Product code: BZJ200CRBJBK/USA**

Fabricated swivel castor with a flat plate fixing fitted with a black elastic rubber tyre on cast iron centred wheel with a ball bearing and side fitting wheel brake. Wheel diameter 200mm, tread width 50mm, overall height 239mm, plate size 115mm x 102mm, hole centres 92mm x 67mm and 76mm x 76mm. Load capacity 450kg.



Diameter (mm)	200
Fixing Option	Plate
Castor Type	Swivel with Wheel Brake
Bearing Type	Ball
Height (mm)	240
Plate Size (mm)	115 x 102
Hole Centres (mm)	76/92 x 76/67
To Suit Fixing Bolt (mm)	10
Wheel Material	Rubber on Cast Iron
Colour / Shore Hardness	Black Elastic Rubber on Cast Iron Rim / 75 Shore A
Temperature Resistance	-20 °C TO +60 °C
Top Plate Thickness (mm)	5.5
Fork Thickness (mm)	5.5
Swivel Radius (mm)	154
Load Capacity (kg)	450
Tread (mm)	50

## BIL GROUP LTD

Porte Marsh Road, Calne, Wiltshire, SN11 9BW

Registered in England No: 2603821

VAT Reg: GB572705729

