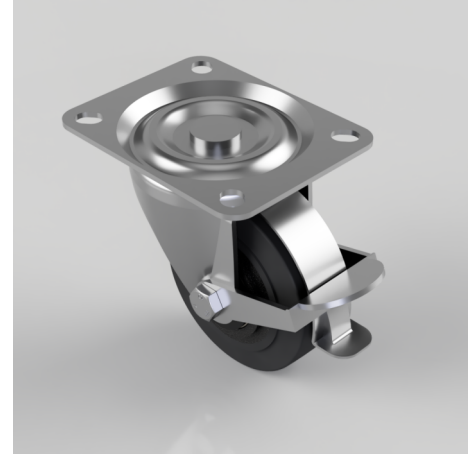


## Elastic Rubber Cast Iron Plate Swivel with Brake Castor 100mm 160kg Load

**Product code: BZH100CRBJBRLP**

Pressed steel swivel castor with a top plate fixing fitted with a black elastic rubber cast iron centred wheel with ball bearings and wheel brake. Wheel diameter 100mm, tread width 38mm, overall height 127mm, top plate 128mm x 102mm, hole centres 105mm x 80mm or 100mm x 76mm. Load capacity 160kg.



Diameter (mm)	100
Castor Type	Swivel with Wheel Brake
Fixing Option	Plate
Height (mm)	127
Wheel Material	Rubber on Cast Iron
Colour / Shore Hardness	Black Elastic Rubber on Cast Iron Rim / 75 Shore A
Temperature Resistance	-20 °C TO +60 °C
Bearing Type	Ball
Load Capacity (kg)	160
Tread (mm)	38
Plate Size (mm)	128 x 102
Hole Centres (mm)	100 x 76, 105 x 80
Top Plate Thickness (mm)	3
Fork Thickness (mm)	3
To Suit Fixing Bolt (mm)	10

### BIL GROUP LTD

Porte Marsh Road, Calne, Wiltshire, SN11 9BW

Registered in England No: 2603821

VAT Reg: GB572705729

