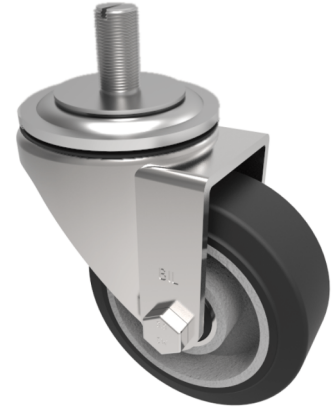


Elastic Rubber on Aluminium 65Shore A Stem Swivel Castor 125mm 250kg Load

Product code: BZH125ERBJST

Pressed steel swivel 16mm threaded castor fitted with a black high elastic natural 65 shore A rubber tyre wheel with an aluminium centre with a ball bearing. Wheel diameter 125mm, tread width 40mm, overall height 155mm, top plate 105mm x 86mm, hole centres 80mm x 60mm. Load capacity 250kg. REACH compliant also PAH-Free rubber to confirm to EU-directive 2005/69/EC



Diameter (mm)	125
Castor Type	Swivel
Fixing Option	Stem
Height (mm)	155
Wheel Material	Rubber on Aluminium
Colour / Shore Hardness	Black Elastic Rubber on Aluminium Rim / 65 Shore A
Temperature Resistance	-30 °C TO +80 °C
Bearing Type	Ball
Load Capacity (kg)	250
Tread (mm)	40
Swivel Radius (mm)	104
Head Dia (mm)	76
To Suit Fixing Bolt (mm)	M16 X 30

BIL GROUP LTD

Porte Marsh Road, Calne, Wiltshire, SN11 9BW

Registered in England No: 2603821

VAT Reg: GB572705729

