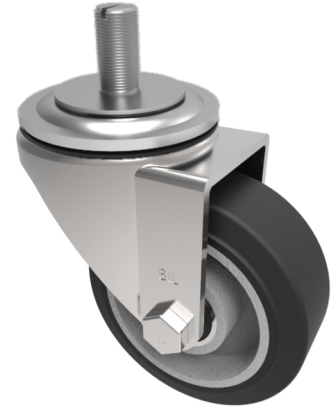


Elastic Rubber on Aluminium 65Shore A Stem Swivel Castor 80mm 150kg Load

Product code: BZH80ERBJST



Pressed steel swivel castor fitted with a black 65 shore A elastic rubber tyre on aluminium centred centre with ball bearings fitted with a 16mm x 25mm threaded stem. Wheel diameter 80mm, Tread width 35mm, Overall Height 110mm, Top Plate 105mm x 86mm, Hole Centres 80mm x 60mm, Load Capacity 180kg. REACH compliant also PAH-Free rubber to confirm to EU-directive 2005/69/EC

Diameter (mm)	80
Castor Type	Swivel
Fixing Option	Stem
Height (mm)	110
Wheel Material	Rubber on Aluminium
Colour / Shore Hardness	Black Elastic Rubber on Aluminium Rim / 65 Shore A
Temperature Resistance	-30 °C TO +80 °C
Bearing Type	Ball
Load Capacity (kg)	180
Tread (mm)	40
Swivel Radius (mm)	78
Head Dia (mm)	76
To Suit Fixing Bolt (mm)	M16 X 30

BIL GROUP LTD

Porte Marsh Road, Calne, Wiltshire, SN11 9BW

Registered in England No: 2603821

VAT Reg: GB572705729

