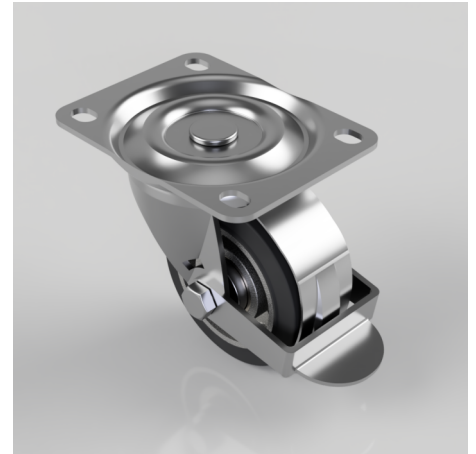


Elastic Rubber on Aluminium 65ShoreA Plate Swivel Castor 75mm 125kg Load

Product code: BZH75ERBJBR

Pressed steel swivel castor fitted with a 65 shore A black elastic rubber tyre wheel with an aluminium centre with ball bearings and a wheel brake. Wheel diameter 75mm, Tread width 32mm, Overall Height 95mm, Top Plate 105mm x 80mm, Hole Centres 86/80mm x 60mm, Load Capacity 125kg. REACH compliant also PAH-Free rubber to confirm to EU-directive 2005/69/EC



Diameter (mm)	75
Castor Type	Swivel with Wheel Brake
Fixing Option	Plate
Height (mm)	95
Wheel Material	Rubber on Aluminium
Colour / Shore Hardness	Black Elastic Rubber on Aluminium Rim / 65 Shore A
Temperature Resistance	-30 °C TO +80 °C
Bearing Type	Ball
Load Capacity (kg)	125
Tread (mm)	32
Swivel Radius (mm)	84
Plate Size (mm)	105 X 80
Hole Centres (mm)	80 X 60
Top Plate Thickness (mm)	2.5
Fork Thickness (mm)	2.5
To Suit Fixing Bolt (mm)	8

BIL GROUP LTD

Porte Marsh Road, Calne, Wiltshire, SN11 9BW

Registered in England No: 2603821

VAT Reg: GB572705729

