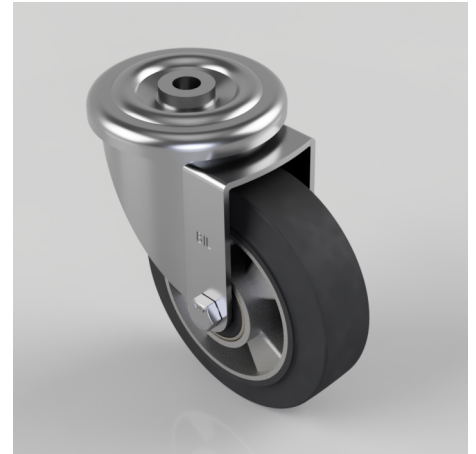


Elastic Rubber on Aluminium Bolt Hole Swivel Castor 150mm 350kg Load

Product code: BZMM150ERBJBH16

Pressed steel swivel castor with 16mm bolt hole fitted with a black high elastic natural 65 shore A rubber tyre aluminium centred wheel with ball bearings. Wheel diameter 150mm, tread width 50mm, overall height 188mm, load capacity 350kg. REACH compliant also PAH-Free rubber to confirm to EU-directive 2005/69/EC



Diameter (mm)	150
Castor Type	Swivel
Fixing Option	Bolt Hole
Height (mm)	188
Wheel Material	Rubber on Aluminium
Colour / Shore Hardness	Black Elastic Rubber on Aluminium Rim / 65 Shore A
Temperature Resistance	-30 °C TO +80 °C
Bearing Type	Ball
Load Capacity (kg)	350
Tread (mm)	50
Swivel Radius (mm)	128
Head Dia (mm)	114
Fork Thickness (mm)	4
To Suit Fixing Bolt (mm)	16