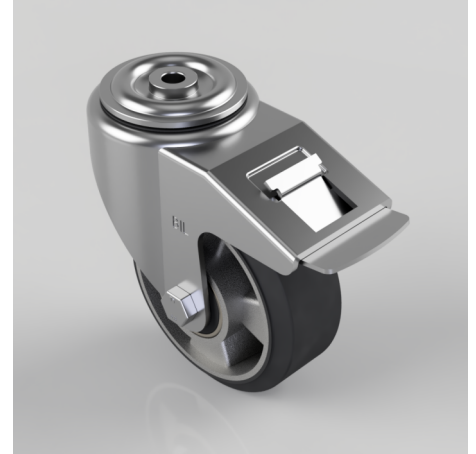


Elastic Rubber on Aluminium Plate Bolt Hole Swivel Castor Brake 125mm 270kg Load

Product code: BZWH125ERBJBH12SWB

Pressed steel swivel castor with a 12mm bolt hole fitted with a black high elastic natural 65 shore A rubber tyred wheel with a aluminium centre with ball bearings with a total lock brake. Wheel diameter 125mm, tread width 50mm, overall height 166mm, Load capacity 270kg. REACH compliant also PAH-Free rubber to confirm to EU-directive 2005/69/EC



Diameter (mm)	125
Castor Type	Swivel with Total Lock Brake
Fixing Option	Bolt Hole
Height (mm)	166
Wheel Material	Rubber on Aluminium
Colour / Shore Hardness	Black Elastic Rubber on Aluminium Rim / 65 Shore A
Temperature Resistance	-30 °C TO +80 °C
Bearing Type	Ball
Load Capacity (kg)	270
Tread (mm)	50
Swivel Radius (mm)	138
Head Dia (mm)	76
Fork Thickness (mm)	3.5
To Suit Fixing Bolt (mm)	12

BIL GROUP LTD

Porte Marsh Road, Calne, Wiltshire, SN11 9BW

Registered in England No: 2603821

VAT Reg: GB572705729

