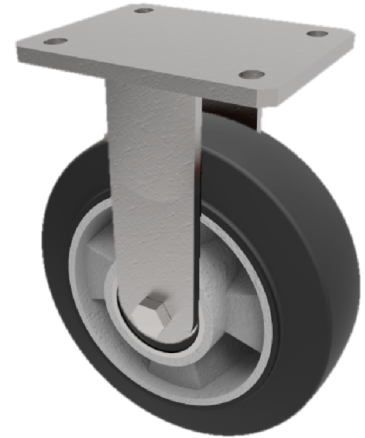


Elastic Rubber on Aluminium Plate Fixed Castor 100mm 250kg Load

Product code: BZMJF100ERBJ

Fabricated zinc plated fixed castor with a top plate fixing fitted with a black 65 shore A elastic rubber tyre aluminium centred ball bearing. Wheel diameter 100mm, tread width 50mm, overall height 143mm, top plate 138mm x 110mm, hole centres 105mm x 80mm/75mm. Load capacity 250kg.



Diameter (mm)	100
Fixing Option	Plate
Castor Type	Fixed
Bearing Type	Ball
Height (mm)	143
Plate Size (mm)	138 x 110
Hole Centres (mm)	105 x 80/75
To Suit Fixing Bolt (mm)	10
Wheel Material	Rubber on Aluminium
Colour / Shore Hardness	Black Elastic Rubber on Aluminium Rim / 65 Shore A
Temperature Resistance	-30 °C TO +80 °C
Top Plate Thickness (mm)	7
Fork Thickness (mm)	6
Load Capacity (kg)	250
Tread (mm)	50

BIL GROUP LTD

Porte Marsh Road, Calne, Wiltshire, SN11 9BW

Registered in England No: 2603821

VAT Reg: GB572705729

