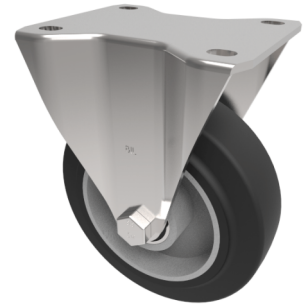


## Elastic Rubber on Aluminium Plate Fixed Castor 125mm 250kg Load

**Product code: BZEHF125ERBJ**

Pressed steel swivel castor with a top plate fixing with a black elastic rubber tyred wheel with a aluminium centre with ball bearing. Wheel diameter 125mm, tread width 40mm, overall height 155mm, top plate 105mm x 88mm, hole centres 80mm x 60mm. Load capacity 250kg.



Diameter (mm)	125
Castor Type	Fixed
Fixing Option	Plate
Height (mm)	155
Wheel Material	Rubber on Aluminium
Colour / Shore Hardness	Black Elastic Rubber on Aluminium Rim / 65 Shore A
Temperature Resistance	-30 °C TO +80 °C
Bearing Type	Ball
Load Capacity (kg)	250
Tread (mm)	40
Plate Size (mm)	105 x 86
Hole Centres (mm)	80 X 60
Top Plate Thickness (mm)	3
Fork Thickness (mm)	3
To Suit Fixing Bolt (mm)	8